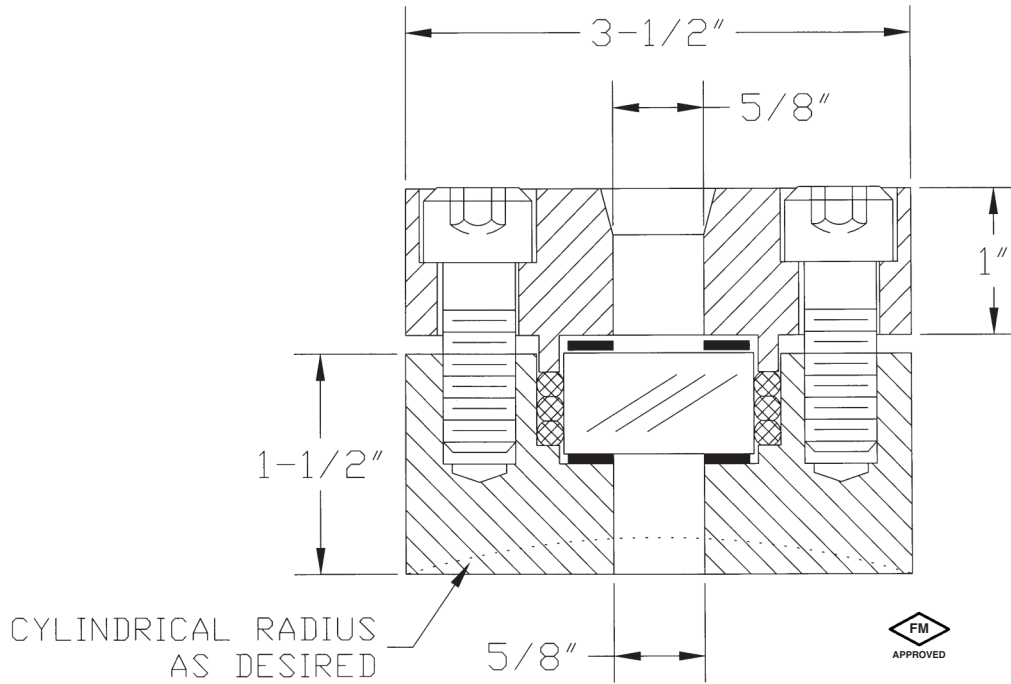


# Weld Pad Liquid Level Gauge

## Engineering Information:



### Single-Section Gauges

Size	Viewing Length	Overall Length
1	3 <sup>13</sup> / <sub>16</sub>	5 <sup>1</sup> / <sub>4</sub>
2	4 <sup>13</sup> / <sub>16</sub>	6 <sup>1</sup> / <sub>4</sub>
3	5 <sup>13</sup> / <sub>16</sub>	7 <sup>1</sup> / <sub>4</sub>
4	6 <sup>13</sup> / <sub>16</sub>	8 <sup>1</sup> / <sub>4</sub>
5	7 <sup>15</sup> / <sub>16</sub>	9 <sup>3</sup> / <sub>8</sub>
6	9 <sup>3</sup> / <sub>16</sub>	10 <sup>5</sup> / <sub>8</sub>
7	10 <sup>5</sup> / <sub>16</sub>	11 <sup>3</sup> / <sub>4</sub>
8	11 <sup>15</sup> / <sub>16</sub>	13 <sup>3</sup> / <sub>8</sub>
9	12 <sup>11</sup> / <sub>16</sub>	14 <sup>1</sup> / <sub>8</sub>

### Two-Section Gauges

Size	Viewing Length	Overall Length
23	13 <sup>1</sup> / <sub>16</sub>	14 <sup>1</sup> / <sub>2</sub>
24	15 <sup>1</sup> / <sub>16</sub>	16 <sup>1</sup> / <sub>2</sub>
25	17 <sup>5</sup> / <sub>16</sub>	18 <sup>3</sup> / <sub>4</sub>
26	19 <sup>13</sup> / <sub>16</sub>	21 <sup>1</sup> / <sub>4</sub>
27	22 <sup>1</sup> / <sub>16</sub>	23 <sup>1</sup> / <sub>2</sub>
28	25 <sup>5</sup> / <sub>16</sub>	26 <sup>3</sup> / <sub>4</sub>
29	26 <sup>13</sup> / <sub>16</sub>	28 <sup>1</sup> / <sub>4</sub>

### Three-Section Gauges

Size	Viewing Length	Overall Length
36	30 <sup>7</sup> / <sub>16</sub>	31 <sup>7</sup> / <sub>8</sub>
37	33 <sup>13</sup> / <sub>16</sub>	35 <sup>1</sup> / <sub>4</sub>
38	38 <sup>11</sup> / <sub>16</sub>	40 <sup>1</sup> / <sub>8</sub>
39	40 <sup>15</sup> / <sub>16</sub>	42 <sup>3</sup> / <sub>8</sub>

### Four-Section Gauges

Size	Viewing Length	Overall Length
47	45 <sup>9</sup> / <sub>16</sub>	47
48	52 <sup>1</sup> / <sub>16</sub>	53 <sup>1</sup> / <sub>2</sub>
49	55 <sup>1</sup> / <sub>16</sub>	56 <sup>1</sup> / <sub>2</sub>

### Five-Section Gauges

Size	Viewing Length	Overall Length
57	57 <sup>5</sup> / <sub>16</sub>	58 <sup>3</sup> / <sub>4</sub>
58	65 <sup>7</sup> / <sub>16</sub>	66 <sup>7</sup> / <sub>8</sub>
59	69 <sup>3</sup> / <sub>16</sub>	70 <sup>5</sup> / <sub>8</sub>

- Units can be stacked or staggered to view greater heights.
- Welding pad dimensions may have to be increased to meet ASME requirements. It is the vessel designer's responsibility to determine reinforcement, corrosion allowance, etc. for the particular application.